

A photograph of a modern hospital room. A woman is sitting on a wooden bench by a large, multi-paned window, reading a book. The room features light-colored wood paneling on the walls and ceiling, a bed with a yellow polka-dot duvet, and a small table with a chair. The window is a Safevent® window installed at Springfield University Hospital.

INTRODUCING OUR

Specialist windows

for mental health

Safevent® window installed at Springfield University Hospital

britplas

ABOUT

The most advanced specialist windows for mental health

Our flagship product, the multi-award-winning and internationally acclaimed Safevent® anti-ligature window, has become a benchmark product for supervised care environments.

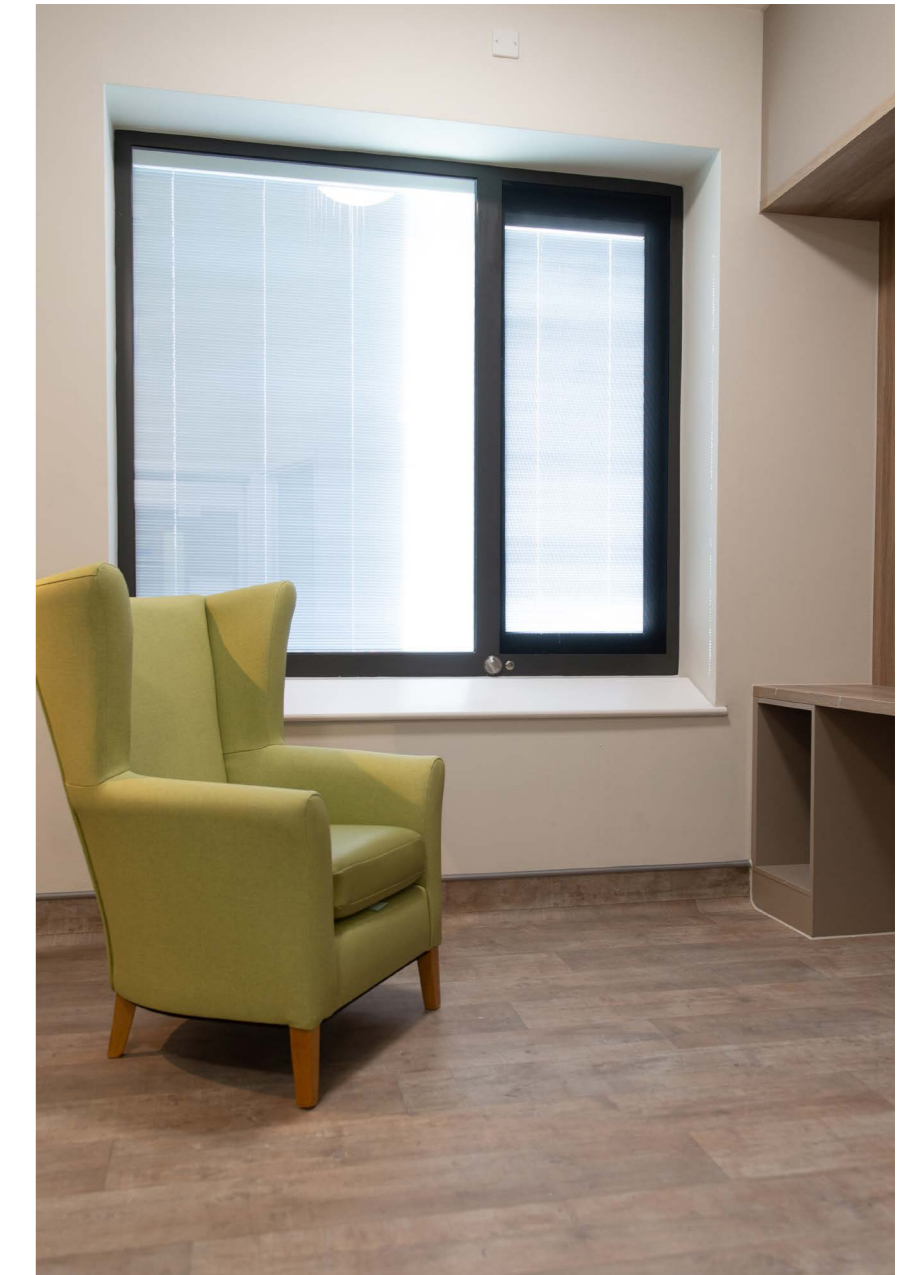
This ground breaking and patented design was first launched in the UK over fifteen years ago. In the intervening years it has been refined in conjunction with clinicians, facilities managers, service users and architects to ensure it remains at the forefront of mental health product design.

With tens of thousands windows now installed and in use throughout the UK and around the globe, we are proud to work with over 80% of NHS Trusts as well as leading private healthcare providers.

A sister product to the Safevent® window, the Intavent is a robust window model with enhanced safety and security features above standard casement windows which is typically used in supervised or common areas of secure environments.

“Britplas have an excellent understanding of the requirements of medium secure environments, gained through extensive experience in the mental health sector.”

John Atkins, West London Mental Health Trust



Safevent®

Benefits

The Safevent® window was developed in response to the requirement for an operable window which also met the safety requirements of secure facilities.

Its reduced ligature design has been extensively tested against continuous attack, whilst also allowing a high degree of service user control and promoting maximum natural light and ventilation.



The Safevent® is a horizontal or vertical sliding window system comprising a double fronted window and a free sliding external sash. The double window has one glazed area and the other is fitted with a stainless steel mesh. The sliding sash is glazed, sealing the mesh side when closed and is weather tight and draughtproof.

01 SAFE

Anti-ligature, prevents passing of contraband and absconson and minimises the opportunity for self-harm.

02 STRONG

Tested to the Environmental Design Guide and designed to withstand aggressive and continuous attack.

03 USER-CONTROLLED

Allows the service user a degree of control over their environment, improving their experience and supporting therapeutic outcomes.

04 ENVIRONMENTALLY FRIENDLY

Allows the free flow of air and reduces the need for mechanical ventilation, reducing running costs.

Safevent®

Features

EASY ACCESS FOR CLEANING

Safevent® Access variant has an external sliding sash with an opening frame to allow direct access to the inside face of the glass and the outside of the mesh for easy cleaning and maintenance.

ULTRA SLIM PROFILE

To maximise light, reduce sightlines and provide enhanced thermal properties.

DESIGN FLEXIBILITY

Available in aluminium and finished in any RAL colour / BS powder.

GLASSSHIELD TECHNOLOGY

Patented system including a plastic compound within frame makeup which helps to absorb impact by creating a cushion between the glass and frame.

FIXED MESH

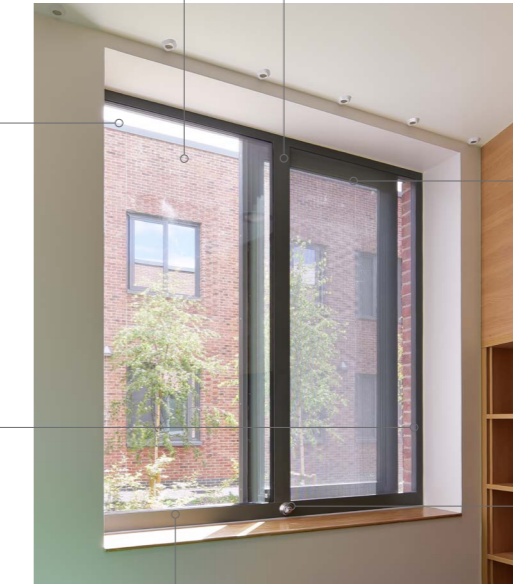
Stainless steel visomesh is permanently fixed into the frame to help eliminate frame gaps which may be used to create ligature points.

MULTASK® HANDLE

Single piece of hardware which does the job of a winder, patient thumb lock and staff lock, to reduce ligature risk.

BOTTOM-DRAINED SILL (EXTERIOR)

Bottom drained sills remove the need for press-in plastic drainage caps and minimise the chances of the drainage channels becoming blocked.



Safevent® Access Technical Spec

PERFORMANCE	
Weather Tested to BS 6375 - 1:2015	
Air Permeability (ENG1026)	Class 3
Watertightness (ENG1027)	Class 8A 450pa
Resistance to windload (EN12211)	Class CE2100
Environmental Tested in accordance with BS EN ISO 10077-1	
U-Value	≤ 1.8 - 2.2 W/m ² °K based on recommended glazing spec
Green Guide Rating	C
Security	
Medium Environmental Design Guide	PAS 24
STS202 BR1-4 (additional spec required, on request)	
Tested by many NHS Trusts to replicate aggressive and continuous attack (video evidence available)	

COMPONENTS	
Frame	
Profile	Bespoke aluminium profile extruded from aluminium alloy 6060/6063 T5/T6 and compliant with BS EN 12020-2: 2001/BS 755-9: 2001
Finish	All RAL / BS powder range / dual colour / bespoke finishes available to BS EN 12206-1:2021 Anodising to BS EN 12373 and BS 3987
Thermal Break	Polyamide strips PA 6.6 25
Standard cill options	125mm, 159mm, 200mm, 250mm (bespoke options available on request)

Full Revit/BIM integration is available for all Safevent window models.

Further technical drawings/models are available on request.

Technical specs for other window models including Safevent Vertical and Safevent Electric also available on request.

COMPONENTS	
Glazing options Further options available on request	
Standard - Fixed Unit	- 6.8mm laminated soft coat (external)
	- 20mm argon filled warm edge spacer
	- 10mm toughened (internal)
Standard - Sash	- 6mm toughened soft coat (external)
	- 20mm argon filled warm edge spacer
	- 6mm toughened (internal)
G-Value	Standard - 0.45-0.48* Solar - 0.32-0.37*
Light Transmittance	Standard - 68-71%*
*Variations	Performance varies by glass specification. Combinations between 32-42mm available upon request
Performance Applications	Self clean, Sand-blast, Solar, Mirror film, Obscure (full or partial) and Safety film
Visomesh	
Anti-tamper and anti-ligature 1.5mm thick stainless steel mesh. Double pressed for better vision and smoother finish. Black 9005 PPC finish as standard. Other PPC / printed artwork finishes available on request.	
Perforation	2mm diameter holes to 3mm centres giving 40.3% open area
Blinds	
Integral Blinds	Electronically operated (20mm spacer required)
Hardware	
Option 1	Multitask handle (stainless steel)
Option 2	- Anti-ligature window winder
	- Flush key lock (staff)
	- Manual thumb turn lock (patient)
Locks (ext. sash)	- Concealed key locks x2
Tricklevent Option	Anti-ligature permanently open
Fixings	
In strict accordance with the relevant British Standards, including BS 6262, fixings to be positioned 150mm from each corner, mullion, transom and at centres not exceeding 300mm or as advised dependent on structure.	

Intavent

Benefits

A sister product to the Safevent® window, the Intavent is a robust window model combining enhanced safety and security with reduced ligature risk in comparison to standard casement windows.

Typically used in supervised or common areas of secure environments, it provides natural light and ventilation, allows service users a good degree of control over their environment, and protects against absconson and the passing of contraband.



The Intavent is a horizontal sliding window system comprising a double fronted window and a free sliding internal sash.

The double window has one glazed area and the other is fitted with a stainless steel mesh. The sliding sash is glazed, sealing the mesh side when closed and is weather tight and draughtproof.

01 SAFE AND SECURE

The window is robust and secure, having been tested against sustained attack to help ensure the safety of both patients and staff.

02 LIGHT & VENTILATION

The window's visomesh is virtually invisible from inside and allows for high levels of natural light and ventilation, due to its 40% open area.

03 USER-CONTROLLED

The window is easily controlled via a pull handle, with the internal sash creating a more conventionally operated window that is intuitive in its operation.

04 DESIGN FLEXIBILITY

Available in aluminium and finished in any RAL colour / BS powder. Speak to our technical sales team for further customisation.

End-to-end service

Britplas offers a genuine end-to-end service to support you with all stages of your project.

PRE-CONSTRUCTION

Our technical sales and estimating teams can provide advice around product selection and any bespoke elements required. We are always happy to look at project-specific modifications and will work with you to engineer the best possible solution to your brief.

DESIGN

Our in-house design department is BIM Level 2 accredited and we have models available for all of our proprietary product range.

MANUFACTURE

Safevent® windows are manufactured at our Warrington factory under ISO 9001, 18001 and 45001 standards.

INSTALLATION

We employ our own specialist installation teams who are trained to the highest standards including working in live mental health environments.

MAINTENANCE

Comprehensive maintenance plans are available and the Safevent® has parts guarantees of up to 25 years.



Case study: Springfield University Hospital

Project case study Springfield University Hospital

Client

South West London & St George's Mental Health NHS Trust

Main contractor

Sir Robert McAlpine

Location

Tooting, London

Sector

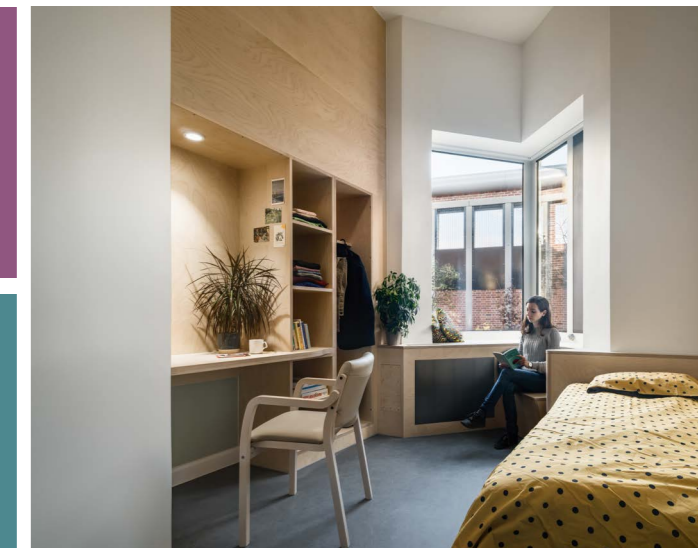
Mental Health

Contract value

c. £1.4m

Products

Safevent Access windows,
casement windows, doors,
Fortress 80 Fencing



britplas

Britplas supplied specialist and casement windows and fencing to South West London & St George's Mental Health NHS Trust's new £160m mental health facility in Tooting, London.

Works at Springfield University Hospital encompassed a redevelopment of the existing mental health facilities, providing a Forensic and Non-Forensic unit to the hospital site in South West London.

The building design required the development of a new corner post and 135-degree corner-coupling bracket in order to allow the pairs of windows to meet in a distinctive apical arrangement.

Britplas engineered a solution which would meet stringent loadbearing and structural

requirements, and reinforce the overall structural integrity of the design.

A special aluminium anodised finish was also developed for the window frames in order to meet aesthetic requirements.

The project also used Fortress 80 Fencing in the creation of secure recreational areas.

The hospital's Trinity Building won 'Project of the Year – New Build UK' at the 2023 Design in Mental Health Awards.

Project case study
St Ann's Hospital

Client
Barnet, Enfield and Haringey Mental Health NHS Trust

Main contractor
IHP

Location
South Tottenham, London

Sector
Mental Health

Contract value
c. £400k

Products
Safevent Access windows



Britplas were appointed to design, manufacture and install their Safevent windows for the new buildings at St Ann's Hospital in Haringey as part of a significant redevelopment project at the site.

As part of a competitive tendering process, the Trust conducted a thorough project-specific review of all window options with the Safevent Access (with Multask handle) emerging as the product of choice.

The windows are some of the largest Safevents ever installed at 2.1m high, with the oversize windows helping to create dramatic elevations as well as boosting light levels in the new facility.

Designed by specialist practice Medical

Architecture, the plans for St Ann's were developed with patients, staff and local stakeholders and involve a series of improvements to the healthcare campus. Works were carried out whilst the remainder of the campus remained a live facility.

The brand new, state-of-the-art mental health wards are considered amongst the best in the country.

Project case study
Bethlem Royal Hospital

Client
South London and Maudsley NHS Foundation Trust

Location
Beckenham, South London

Sector
Mental Health

Contract value
c. £3m

Products
Safevent Access windows



Safevent Access windows were chosen by South London and Maudsley NHS Foundation Trust as part of a large refurbishment project at Bethlem Royal Hospital.

Bethlem Royal is the oldest psychiatric hospital in the world, dating back to 1247. As part of a significant refurbishment project at the facility in 2020, some 750 Safevent windows were provided across five buildings and fifteen live wards.

Britplas worked with the Trust to develop a new innovative use of mirror film and obscure sandblast glazing in order to overcome unique privacy and dignity issues across the site.

Roger Thornton, NEC Works Supervisor

PM, commented "Britplas' Safevent window has been widely specified in secure facilities across the South London and Maudsley estate due to the quality of both the product itself and the service provided by the pre-construction and installation teams.

In the case of the refurbishment of Bethlem Royal Hospital, Britplas worked closely with us to tailor a bespoke solution to the requirements of the site with impressive results. We look forward to working with them again in the future."

Important: The information in this literature is provided for guidance purposes only. It is provided subject to contract and no representation or warranty is made or intended. The window should be assessed or tested by each client to ensure it meets the requirement of their patient group and intended use.

Anti-ligature disclaimer: This product may have varying degrees of anti-ligature characteristics. Any anti-ligature characteristics there may be are only intended to supplement and not replace or be an alternative to appropriate risk assessment and supervision of those who may be at risk. Other necessary protective measures may be required in the specific circumstances of usage. The customer must satisfy itself that the product(s) are suitable for their intended use. Britplas does not offer any products for sale as being 'ligature-free' and to the fullest extent permissible under applicable law it will not be liable for any claims connected to or arising from the attachment of ligatures on its products.

Contact us

18 Kingsland Grange, Woolston, Warrington, Cheshire WA1 4RW

T: +44 (0)1925 824317 E: sales@britplas.com

britplas.com

britplas