

RYNO®

OceanGreen

Helping to keep our oceans clean



Pineapple



We are committed to reducing our impact on the environment, as demonstrated by our target to reduce carbon emissions associated with the manufacturing of our products by 70% by 2030.

Key to achieving this target will be continuing to increase our use of recycled materials. By doing so, we can further reduce emissions associated with the extraction and processing of virgin material.

Products in our OceanGreen Ryno range include 50% recycled content derived from fishing nets and equipment.

When the nets are no longer required, they are collected and turned into recycled polymer granules. This recycling process prevents the nets reaching our oceans and harming sealife, and reduces the carbon footprint of Oceangreen product.

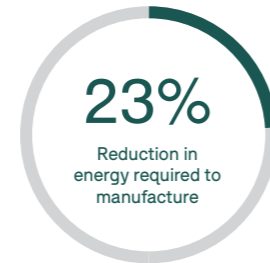
KEEPING OUR OCEANS CLEAN

Abandoned or lost fishing equipment account for around 10% of the plastics that end up in our oceans.¹

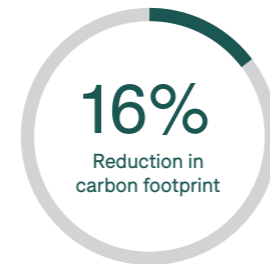
“Ghost nets” like these can be harmful to sealife, with fish, birds, crabs and other species becoming tangled in them and attracting larger animals like dolphins and whales which can also become trapped. They can also cause damage to sea beds and coral reefs by becoming snagged and shading them from sunlight.

By collecting these nets before they reach our oceans, and use them to manufacture our products, we’re minimising the harm abandoned nets can cause to our oceans.

REDUCING CARBON EMISSIONS



By reducing the amount of virgin material used to produce our furniture, we reduce the energy consumption by 23%



We’re assessing all of our products for carbon reduction opportunities.

The OceanGreen material offers a 16% reduction in carbon emissions.

By using *recycled* materials to manufacture *recyclable* products, we’re creating a sustainable supply chain.

1 The nets are collected, preventing them from reaching our oceans.



2 The nets are washed, dried and shredded into fine strands.

4 OceanGreen products require 23% less energy to manufacture, and are themselves 100% recyclable.



3 The strands are mixed with 50% virgin polymer and extruded into granules.



1. https://www.greenpeace.org/static/planet4-international-stateless/2019/11/8f290a4f-ghostgearfishingreport2019_greenpeace.pdf



RYNO® SEATING



Ryno dining chair
1RYD-02
880H | 500W | 620D (mm)
Seat height: 450mm
Weight: Up to 54kg



Ryno club chair
1RYC-02
895H | 615W | 615D (mm)
Seat height: 450mm
Weight: Up to 56kg



Ryno lounge chair
1RYL-02
780H | 600W | 760D (mm)
Seat height: 420mm
Weight: Up to 80kg



Ryno tub chair
1RYU-02
805H | 670W | 680D (mm)
Seat height: 430mm
Weight: Up to 82kg



Ryno Rocker
1RYR-00
867H | 761W | 992D (mm)
Seat height: 450mm
Weight: Up to 65kg



Ryno 2-seater
1RY2-123
810H | 1496W | 674D (mm)
Seat height: 435mm
Weight: Up to 123kg



Ryno stool
1RYS-02
470H | 445W | 395D (mm)
Seat height: 470mm
Weight: Up to 49kg



Ryno bench
1RYN-02
470H | 1400W | 395D (mm)
Seat height: 470mm
Weight: Up to 88kg



Ryno coffee table
1RYF-02
425H | 655W | 655D (mm)
Weight: Up to 53kg

KEY FEATURES

- One-piece design makes products water-resistant and prevents concealment of contraband
- Heavily weighted as standard to deter misuse (other weight options available)

- Ergonomically designed to give excellent comfort
- Hygienic wipe-clean material
- Safely rounded corners

OPTIONS

- Innovative floor fixing solutions
- Linking bracket to connect chairs
- Lightweight models available



RYNO® BEDROOM



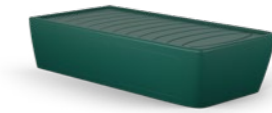
Ryno Chest with 3 compartments
1RYOC
735H | 698W | 507D (mm)
Weight: 24kg



Ryno Desk
1RYOD
735H | 698W | 507D (mm)
Weight: 20kg



Ryno Bedside with 2 compartments
1RYOB
595H | 400W | 380D (mm)
Weight: 13kg



Ryno 3' bed
1RYB
480H | 2100L | 1010W (mm)
Weight: 110kg



Ryno 3' bed with storage
1RYBS
480H | 2100L | 1010W (mm)
Weight: 103kg



Ryno 2'6" Cube bed
1RYCB-FF
380H | 2035L | 815W (mm)
Weight: 50kg



Ryno Wall shelf with 3 compartments
1RYOWS
1200H | 699W | 313D (mm)
Weight: 20kg



Ryno mini wall shelf
1RYMWS
433H | 214W | 140D (mm)
Weight: 2kg



Ryno Open wardrobe fully shelved
1RYOW-00
2000H | 700W | 510D (mm)
Weight: 45kg



Ryno Open wardrobe
1RYOWH-00
2000H | 700W | 510D (mm)
Weight: 45kg



Ryno Open modular storage
1RYOMS-00
1981H | 547W | 533D (mm)
Weight: 40kg

KEY FEATURES

- One-piece design makes products water-resistant and prevents concealment of contraband
- Reduced-ligature design features
- Hygienic wipe-clean material

- Sloping top and stepped-back shelves to prevent climbing
- Organic textures help to create an environment that fosters recovery
- Safely rounded corners

OPTIONS

- Hidden wall and floor fixing methods





Please be aware that due to the composite nature of the OceanGreen material, there may be a slight colour variation between products.

See for yourself...

To arrange a demonstration or book a visit to our showroom, please call +44 (0)1622 237830

Pineapple, Westmead, Aylesford, Maidstone, Kent, ME20 6XJ

T	+44 (0)1622 237830
E	sales@pineapplecontracts.com
W	uk.pineapplecontracts.com

Pineapple